

EspMenu

**The default menu system that provides access to
the ESP product suite**

User Manual



Treehouse Software, Inc.

2605 Nicholson Road, Suite 230

Sewickley, PA 15143

Phone: 724.759.7070

Fax: 724.759.7067

E-mail: tsi@treehouse.com

<http://www.treehouse.com>



READ ME FIRST

Copyright Reserved ©

This document contains proprietary information that is protected by copyright law. All rights are reserved. No part of this document may be reproduced, transmitted, transcribed, stored in a retrieval system or translated into any language in any form or by any means, that is electronic, mechanical, magnetic, optical, chemical, manual or otherwise, in whole or in part, without the prior written consent of Cronus Consulting (Pty) Ltd.

Disclaimer

Cronus Consulting (Pty) Ltd hereby disclaims any and all guarantees and warranties for the correct use and application of the ESP software.

Cronus Consulting (Pty) Ltd reserves the right to revise and make changes to the software and the content of this document from time to time without obligation to notify any person of the changes.

Ownership

The ESP Products are developed by, and is fully owned by Cronus Consulting (Pty) Ltd.



TABLE OF CONTENTS

READ ME FIRST	2
1. INTRODUCTION	4
1.1 PURPOSE	4
1.2 PRODUCT OVERVIEW	4
2. DEFINITIONS AND SECURITY	5
2.1 ACCESSING ESPMENU	5
2.2 USER EXIT PROGRAM	8
3. MENU OVERVIEW AND FUNCTION SELECTION	9
4. FUNCTION OVERVIEW	12
4.1 MA002 – USER MAINTENANCE.....	12
4.2 MA003 – LINK MENUS TO USERS.....	14
4.3 MA004 – LINK MENUS TO USERS (LINKED MENUS ONLY)	16
4.4 MA005 – LINK FUNCTIONS TO USERS.....	17
4.5 MA006 – LINK FUNCTIONS TO USERS (ONLY LINKED FUNCTIONS)	19
4.6 MA007 – LINK MENUS TO MENU	21
4.7 MA008 – FUNCTION MAINTENANCE	22
4.8 MA009 – MENU MAINTENANCE	23
4.9 MA010 – CODE MAINTENANCE	24



1. INTRODUCTION

1.1 Purpose

To provide users system access in a controlled and secure manner.

1.2 Product Overview

EspMenu is the default **Cronus** menu system that provides access in a controlled and secure manner to the ESP product suite. EspMenu has embedded security on menu, function and option level. Allocation of menus and functions to individual users or menu groups can easily be done using the EspMenu administrator account.





By defining groups, multiple users can be assigned to one or more groups thus simplifying the task of granting user access.

There is no limitation to the number of levels of menus. Security is provided down to program option level. A maximum of 20 options can be defined at the program or function level.

Security at the function-level is provided in a hierarchical manner. One top-level user (MENUADM) has access to all functions and menus in the system. This top-level user can assign functions and menus to other users. A user can then distribute those functions and menus allocated to him/her to other users of whom he/she is the owner.

All multiple choice fields are validated using a help-and-fill facility. If an entered field is incorrect a window is displayed with the possible values. The correct value is selected from the list and pulled into the corresponding field value.

EspMenu provides the following functionality:

-  Access to ESP function and product suite.
-  Security based on O/S groups
-  Online printer definitions
-  Dynamic generation of menu systems



2. DEFINITIONS AND SECURITY

2.1 Accessing EspMenu

The **EspMenu** system is invoked by executing the "**FAST**" command in library ESPSOFT or automatically if the default startup program "**ESPSETUP**" is executed.

Menu structures are dynamically generated based on the access granted by the menu administrator. The menu administrator or master account has unrestricted access to all the defined menus and functions.

Access to ESP menus and functions for subsequent users is based on primary O/S group and secondary O/S groups or combination thereof. The menu program builds a set of functions based on the users default privileges and/or O/S primary and secondary group definitions.

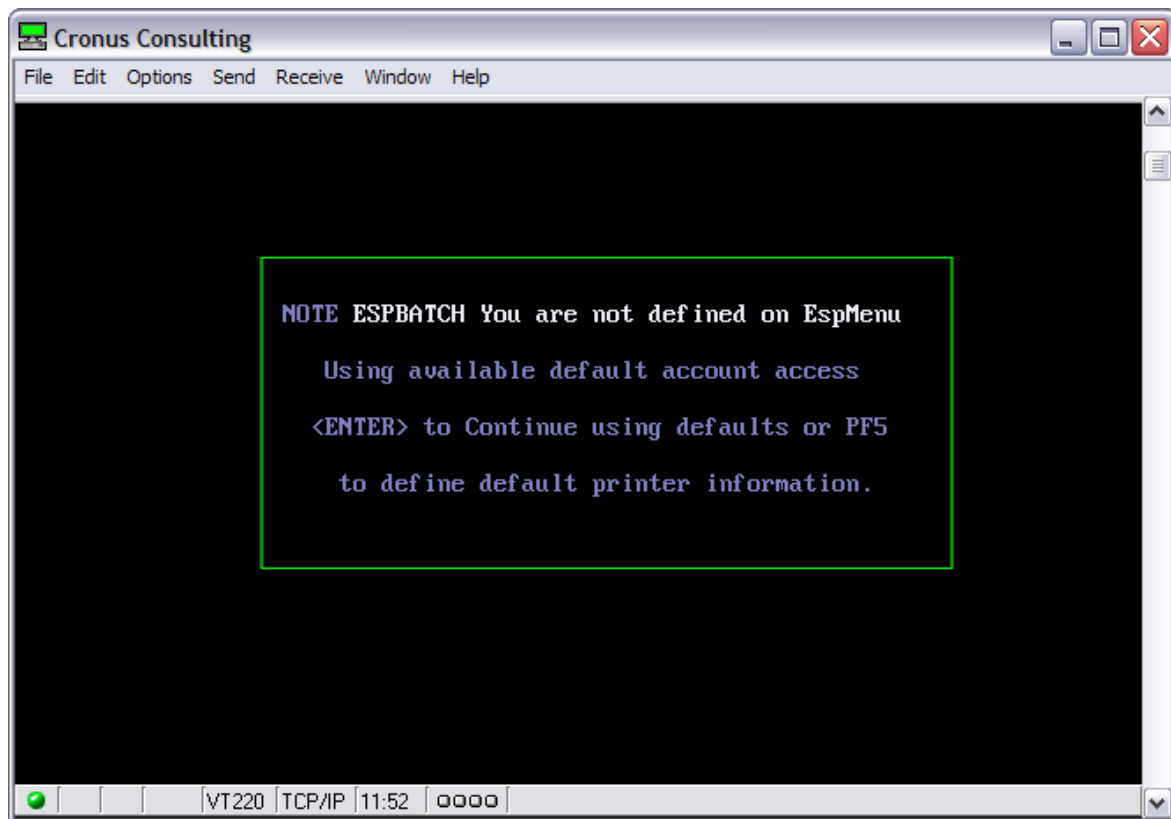
To access EspMenu as the administrator, the user must be linked to the O/S group "**cronus**". In addition to this, a user defined **ADMIN** group can also be defined (MA010) – users belonging to the ADMIN group will also be allowed to execute EspMenu with MENUADM security – unless restricted by changing the user profile under MA002 – User Maintenance.

Additional security exists at function level where certain users do not necessarily have full access to all the options for a specific function.



The following message is displayed when the user that is attempting to access EspMenu has not been created as a valid EspMenu user account.

The user can at this point continue with available defaults (using the menus and functions defined by MENUADM for his/her group account) or press **PF5** to automatically generate a user account. The user is required to enter at least 1 default printer.



This information message is maintained in the user-exit program **ESPUDEF** and can be modified to suite your requirements.



A warning message is displayed if the user opted to continue with the available defaults, but:

- a) Does not have the correct (or any other) primary or secondary O/S groups linked to his/her account
- b) The user has been restricted under the user maintenance function MA002 (MENUADM=N) and has only the ADMIN group defined as secondary group.
- c) Has no other O/S groups associated to his/her account.

User and group accounts are maintained under function **MA002** – User Maintenance.

The users default groups and user-id are displayed (limited to 3) – Access to EspMenu is revoked.



For the purpose of this document we assume that the user has full access - linked to the secondary Operating System group "**cronus**".

"This group might not exist and can be created by the Administrator"



2.2 User Exit Program

The startup program **ESPSETUP** executes a sub-program **ESPUDEF** that defines the user defaults. This program can be customized to include you application specifics.

The validation on EspMenu access and printer default attributes, email addresses etc can be customized in program **ESPUDEF** (located in the **ESPSOFT** library)



3. MENU OVERVIEW AND FUNCTION SELECTION

Once a user has logged on to the EspMenu system – the default system menu will be displayed with all functions that the user has access to or products that are installed. The following information is displayed on the menu screen:

```

Cronus Consulting
File Edit Options Send Receive Window Help

MPMENU2                *** Cronus Consulting - DEV ***                MM1MENU2
Oct 03,06                - Real Time System Menu -                        10:32 AM

CC      EspControl - Change Control System (I.S.R)
JS      EspBatch   - Job Scheduler
MA      EspMenu    - Menu Administration

Printer : laser1                User : MENUADM
Function: _____ Data: _____
Enter-PF1---PF2---PF3---PF4---PF5---PF6---PF7---PF8---PF9---PF10--PF11--PF12---
                               SetPr   PgUp  PgDn  PrScr   Logof

VT220 | TCP/IP | 10:33 | 0000

```

Line by Line

- Top line - Environment name
- Second line - Date, Menu Name and Time
- Lines 4 to 18 - SubMenus
- Line 20 - Default Printer-Id (UNDEFINED is displayed if no printer has been assigned)
- The User-Id of the current user
- Line 21 - Function selection area
- Line 22 and 23 - Available function keys

The user default printer(s) can only be set on this menu (main-menu) This is done using **PF5** – the printers should be predefined using function **JS004** (EspBatch) – Access to this function is controlled by the User Maintenance function **MA002** and is only applicable with use of EspBatch.



EspMenu function list as seen when Menu **MA** is selected.

```

Cronus Consulting
File Edit Options Send Receive Window Help

MPFUNC2          *** Cronus Consulting - ESPSOFT ***          MM1FUNC2
Oct 10,06        - MA : EspMenu      - Menu Administration -          01:28:PM

002      User Maintenance
003      Link Menu's To Users
004      Link Menu's To Users (Linked Menus Only)
005      Link Functions To Users
006      Link Functions To Users (Linked Functions Only)
007      Link Menu's To Menu's
008      Function Maintenance
009      Menu Maintenance
010      Code Maintenance

Printer : laser1                               User : MENUADM
Function:  Data:
Enter-PF1---PF2---PF3---PF4---PF5---PF6---PF7---PF8---PF9---PF10---PF11---PF12---
          Exit      SetPr      PgDn  PrScr      Logof

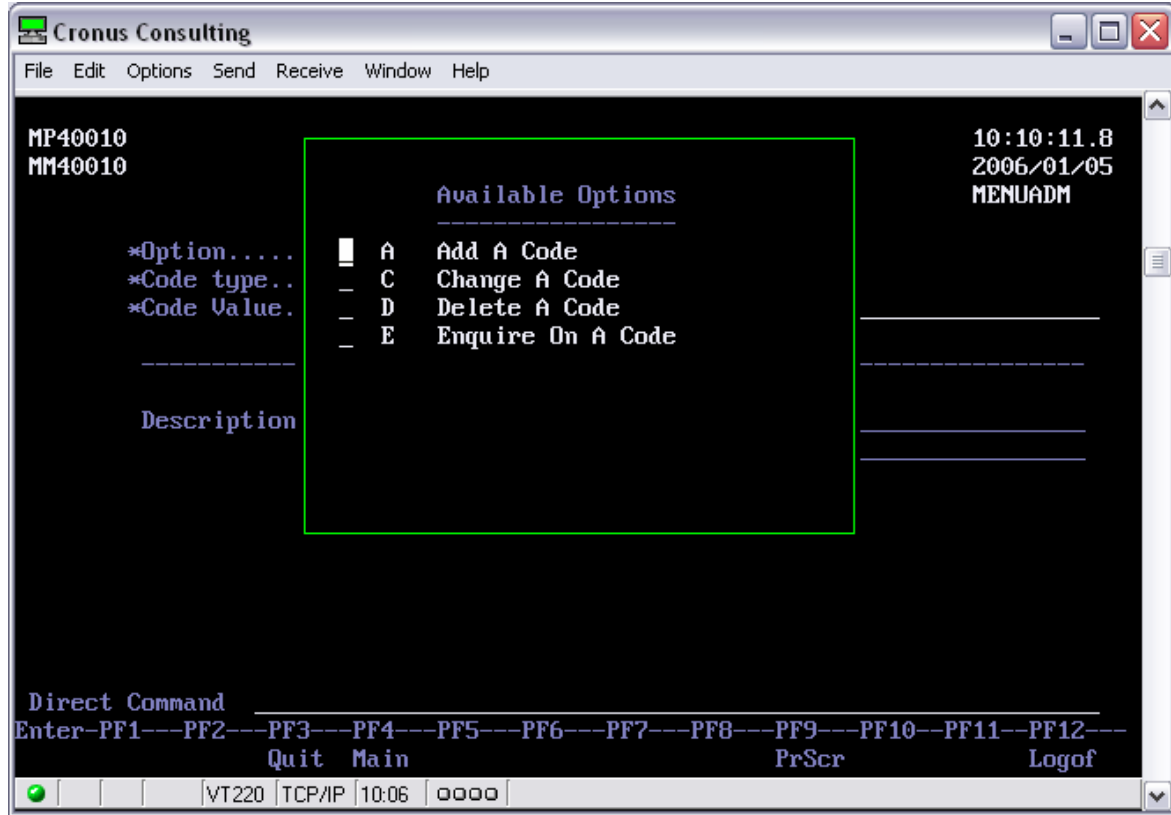
VT220 TCP/IP 13:29 0000
  
```

Function keys:

- PF3 - Return to Main Menu
- PF5 - Set up default printer assignments
- PF7 - Page Backward
- PF8 - Page Forward
- PF9 - Creates a PRINT SCREEN and routes it to users default printer
- PF12 - Logoff

Function / Menu selection can be done as follows:

- All menu and function selection is cursor sensitive and can be selected by positioning the cursor on the line containing the desired menu or function and then pressing <ENTER>.
- Typing the menu or function name in the function selection area. Parameters required by the function can be typed in the data area, which will be passed to the function.



Once a function is selected that contains an OPTION field, the user will be required to enter a valid option, the option entered by the user will be validated against the predefined access set up for that user. Thus only allowing the user to perform actions at function level according to his/her security profile. If the option field is omitted and the <ENTER> key is pressed, a window containing valid options will be displayed allowing the user to choose the desired option. Option selection can be accomplished by marking the desired option or by placing the cursor in the line containing the option and pressing <ENTER>.



4. FUNCTION OVERVIEW

4.1 MA002 – User Maintenance

This function is used to maintain users or groups accounts. This function should be executed using the administrator User-Id “MENUADM”

```

Cronus Consulting
File Edit Options Send Receive Window Help
MP20001 *** Cronus Consulting - ESPSOFT *** 11:39:41.0
MM20001 User Maintenance 2006/10/10
MENUADM

Option.: C
User ID.: DEMO___ Copy from.: ___

-----
User Name .....: DEMO ACCOUNT
Owner.....: MENUADM_

User Status.....: 1 ( 1 = Normal Access 9 = Suspended )
User Language.....: 1_ ( 1 = English 25 = Afrikaans )
Allow Printer Change....: Y
MENUADM Account.....: Y
Telephone Number.....: ___
User Department.....: ___
User Location.....: ___

Direct Command:
Enter-PF1---PF2---PF3---PF4---PF5---PF6---PF7---PF8---PF9---PF10---PF11---PF12---
Quit Main Print PrScr Logof
VT220 TCP/IP 11:40 0000

```

Function Options:

- A - Add a User
- C - Change a User
- D - Delete a User
- E - Enquire on a User

When adding a user an existing users profile can be copied by filling the “Copy From” field. If an invalid User-Id is specified a list of available users will be displayed and the desired user can be selected.

**User Information:**

- Copy From - When creating a new User-Id an existing User-Id can be specified (The new User-Id will inherit all menu(s) and function(s) assigned to the User-Id specified in the Copy from field).
- User Name - The users name or a description of the User-Id.
- Owner - This is the owner of this User-Id. (Normally MENUADM).
- User Status - 1 – Active User
9 – Suspended User
- User Language - Users preferred language.
- Allow Printer Change - This option will allow the user to change his/her default printer(s) by executing **PF5** on the EspMenu main menu.
- MENUADM Account - This option will allow the user to access the EspMenu system as using MENUADM permissions. This is normally reserved for installations where secondary O/S groups are not used. User access is then controlled by the specific functions and menu's allocated to that specific user account.
- Default Printer(s) (**PF5**) - Assign default printer(s) for a user. Printers are maintained in function **JS004 Printer Table Maintenance**. (if applicable)

User defined fields like telephone numbers, user department and user location can be completed but is not validated or required.

Group Access Control

Access to EspMenu can be controlled by using secondary O/S user groups: If secondary groups are implemented the system will act according to the user's secondary O/S group to allow access to the menu system.

The O/S group <**cronus**> will automatically have full MENUADM access to the EspMenu product. Users can be restricted to have MENUADM access by allocating them to a different group or by modifying their user profile in MA002 by setting **MENUADM Account** to **N**.



4.2 MA003 – Link Menus to Users

This function is used to link selected menu(s) to the specific user or group. If the User-Id is omitted a list of valid User-Id's will be displayed.

```

Cronus Consulting
File Edit Options Send Receive Window Help

MP20100          *** Cronus Consulting - ESPSOFT ***          13:07:23.4
MM20101          Link Menu's To Users          2006/02/03
                                          MENUADM

  User id.: DEVELOP
        Show Copy
Prev New Main Child Fu Menu      Description
-----
X   X   Y   -   -   CC      Change Control System (I.S.R)
X   X   Y   -   -   JS      Job Scheduler
X   X   Y   -   -   MA      Menu Administration
-   -   -   -   -   SW      Information Management

Reposition: _____
Direct Command: _____
Enter-PF1---PF2---PF3---PF4---PF5---PF6---PF7---PF8---PF9---PF10---PF11---PF12---
          Quit Main                                PrScr                                Logof

VT220 TCP/IP 13:07 0000
  
```

After selecting the User-Id or group name, a list of available menus (system wide) will be displayed. Previously linked Menus are indicated with an 'X' in the (Prev) column. Additional menus can be added to the current suite of menu(s) by marking the (New) column with an 'X'. By removing the 'X' in the 'New' column the menu link will be removed from the user profile.

Required Information:

- User-Id - The User-Id or group-id that the menu(s) must be linked to.
- New Column - By marking this field with an 'X', you can either add a menu for the supplied user or if the 'X' in this column is removed the menu is removed for this user. **NB!** Menu(s) removed from the owner User-Id will affect all children of the specific user.
- Show Main - When linking a menu this indicator will determine whether the menu is displayed on the Main Menu.



-
- Copy Children - If marked with a 'Y', the linked menu(s) will be copied to the supplied User-Id's children.
 - Copy Functions - If marked with a 'Y', the linked function(s) will be copied to the supplied User-Id's children.



4.3 MA004 – Link Menus to Users (Linked Menu only)

This function will display only menu(s) previously linked to the specified User-Id or group. If the User-Id is omitted a list of valid User-Id's will be displayed.

```

Cronus Consulting
File Edit Options Send Receive Window Help

MP20150      *** Cronus Consulting - ESPSOFT ***      13:07:39.7
MM20101      Link Menu's To Users ( Linked Menu Only)      2006/02/03
                                                    MENUADM

  User id.: DEVELOP
    Show Copy
Prev New Main Child Fu Menu      Description
-----
X  X  Y  -  -  CC      Change Control System (I.S.R)
X  X  Y  -  -  JS      Job Scheduler
X  X  Y  -  -  MA      Menu Administration

Reposition: _____
Direct Command: _____
Enter-PF1---PF2---PF3---PF4---PF5---PF6---PF7---PF8---PF9---PF10---PF11---PF12---
          Quit Main                                PrScr                                Logof
VT220 TCP/IP 13:07 0000

```

After selecting the User-Id, a list of previously linked menus will be displayed indicated by an 'X' in the (Prev) column. By removing the 'X' in the 'New' column the menu link will be removed from the user profile.

Required Information:

- User-Id - This is the User-Id or group that the menu(s) must be linked to.
- New Column - By removing the 'X' in this column, the menu is removed for this user. **NB!** Menu(s) removed from the owner User-Id will affect all children of the specific user.
- Show Main - When linking a menu this indicator will determine whether the menu is displayed on the Main Menu.
- Copy Children - If marked with a 'Y', the linked menu(s) will be copied to the supplied User-Id's children.
- Copy Functions - If marked with a 'Y', the linked function(s) will be copied to the supplied User-Id's children.



4.4 MA005 – Link Functions to Users

This function is used to link certain function(s) to the supplied User-Id or group. If the User-Id is omitted a list of valid User-Id's will be displayed. This also applies for the Menu-Id, a list of all available Menu-Id(s) will be displayed, from which a selection can be made.

```

Cronus Consulting
File Edit Options Send Receive Window Help

MP20200      *** Cronus Consulting - ESPSOFT ***      13:07:59.4
MM20201      Link Functions To Users                       2006/02/03
                                                    MENUADM

User id.: DEVELOP      Menu id.: JS

Prev New Function Seq Ch Options      Description
-----
X X JS002  _10  ACDE      Code Maintenance
X X JS003  _10      Job Class Maintenance
      JS004      ACDE      Printer Table Maintenance
X X JS006  _10      Maintain Batch Jobs
X X JS010  _10      Reschedule Jobs
X X JS011  _10      Maintain Executing Jobs
X X JS012  _10      View Scheduled and Executing J
X X JS013  _10      Modify Execution Times
X X JS014  _10      Maintain Scheduled Jobs
X X JS015  _10      Terminate Schedulers
X X JS016  _10      Batch Statistics
X X JS055  _10      View Batch Jobs per User, Date

Reposition: █
Direct Command:
Enter-PF1---PF2---PF3---PF4---PF5---PF6---PF7---PF8---PF9---PF10---PF11---PF12---
          Quit Main                      PrScr                      Logof

VT220 TCP/IP 13:07 0000

```

All available functions (system wide) are displayed from which you can link or remove. Previously linked functions are displayed in the 'Prev' column. These functions can also be removed by removing the 'X' in the 'New' column. New functions can be linked by means of an 'X' in the new column.

Required Information:

- User-Id - The User-Id or group that the function(s) must be linked to.
- Menu-Id - This is the Menu-Id that the function(s) must be linked to.
- New Column - By removing the 'X' in this column, the function is removed for this user. **NB!** Function(s) removed from the owner User-Id will affect all children of the specific user.
- Sequence Number - The selected function can be added in a specific sequence on user's menu.



-
- Child - This will link the selected function to the supplied User-Id's children.
 - Options - The functions valid options are displayed in this column. These options can be removed for a specific user.



4.5 MA006 – Link Functions to Users (Only Linked Functions)

This function is used to link and maintain previously linked function(s) to the supplied User-Id or group. If the User-Id is omitted a list of valid User-Id's will be displayed. This also applies for the Menu-Id, a list of all available Menu-Id(s) will be displayed, from which a selection can be made.

```

Cronus Consulting
File Edit Options Send Receive Window Help

MP20250      *** Cronus Consulting - ESPSOFT ***      13:08:13.8
MM20201      Link Functions To Users ( Only Linked Functions )  2006/02/03
                                                    MENUADM

User id.: MENUADM   Menu id.: JS

Prev New Function Seq Ch Options      Description
-----
X X JS002   10  ACDE      Code Maintenance
X X JS003   10         Job Class Maintenance
X X JS004   10  ACDE      Printer Table Maintenance
X X JS006   10         Maintain Batch Jobs
X X JS010   10         Reschedule Jobs
X X JS011   10         Maintain Executing Jobs
X X JS012   10         View Scheduled and Executing J
X X JS013   10         Modify Execution Times
X X JS014   10         Maintain Scheduled Jobs
X X JS015   10         Terminate Schedulers
X X JS016   10         Batch Statistics
X X JS055   10         View Batch Jobs per User, Date

Reposition: █
Direct Command:
Enter-PF1---PF2---PF3---PF4---PF5---PF6---PF7---PF8---PF9---PF10---PF11---PF12---
                Quit Main                                PrScr                Logof

VT220 TCP/IP 13:08 0000

```

All previously linked functions are displayed which can be removed by removing the 'X' in the 'New' column.

Required Information:

- User-Id - The User-Id or group that the function(s) must be linked to.
- Menu-Id - This is the Menu-Id that the function(s) must be linked to.
- New Column - By marking this field with an 'X', you can either add a function for the supplied user or if the 'X' in this column is removed the function is removed for this user. **NB!** Function(s) removed from the owner User-Id will affect all children of the specific user.
- Sequence Number - The selected function can be added in a specific sequence on user's menu.



-
- Child - This will link the selected function to the supplied User-Id's children.
 - Options - The functions valid options are displayed in this column. These options can be removed for a specific user.



4.6 MA007 – Link Menus to Menus

The function will allow you to link sub-menus to menus. The User-Id or group-id and menu-id are required to which the menu must be linked. These values can be selected from the help-and-fill facility.

```

Cronus Consulting
File Edit Options Send Receive Window Help

MP20500      *** Cronus Consulting - ESPSOFT ***      13:19:44.9
MM20501      Link Menu's To Menu's                    2006/02/03
                                                MENUADM

  User id: MENUADM  Menu Administrator
  Menu id: JS      Job Scheduler
Prev New Menu      Description
-----
-  CC      100  Change Control System (I.S.R)
-  JS      100  Job Scheduler
X  MA      100  Menu Administration
-  SW      100  Information Management

Reposition : _____
Direct Command: _____
Enter-PF1---PF2---PF3---PF4---PF5---PF6---PF7---PF8---PF9---PF10---PF11---PF12---
                Quit Main                PrScr                Logof

VT220 TCP/IP 13:19 0000

```

After all the parameters are entered a list of all menus (system wide) will be displayed.

This function allows for a multi-level set of menus that can be grouped to suit any user requirements. A sequence number allows for a specific order in which the menus will appear for a given User-Id.

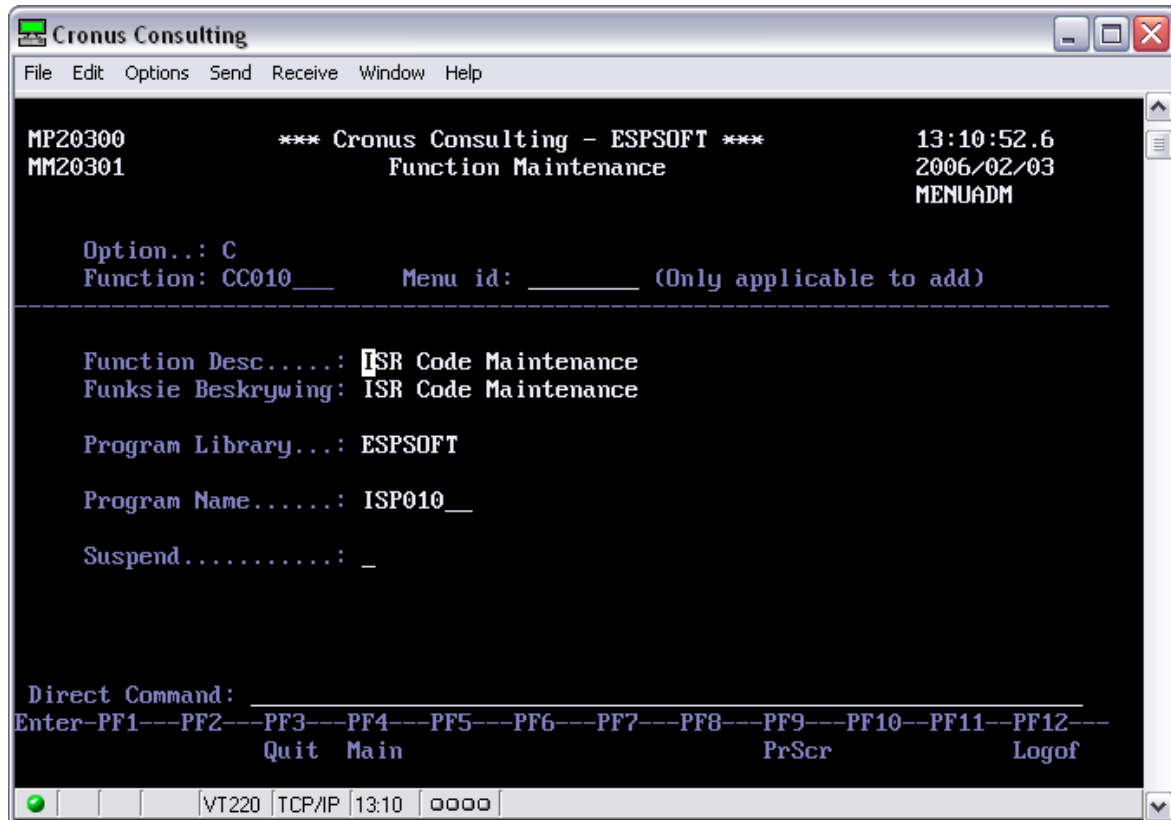
Required Information:

- New Column : Mark with a 'X' to link the selected menu to the current menu.
If the 'X' in the 'NEW' column is removed the menu is removed from that menu.
- Sequence : Sequence number in which order the linked menu will be displayed.



4.7 MA008 – Function Maintenance

The function is used to maintain function attributes. This function should be executed using the administrator User-Id “MENUADM”. After selecting this function the required option must be supplied. This field is validated using a help-and-fill facility.



Function Options:

The relevant function description is displayed. The Program Library field indicates the actual program library. A function can also be suspended by marking the suspend indicator with a 'Y'. A suspended function cannot be executed from any direct command or any menu. To reinstate a suspended function the indicator should be set to 'N'.

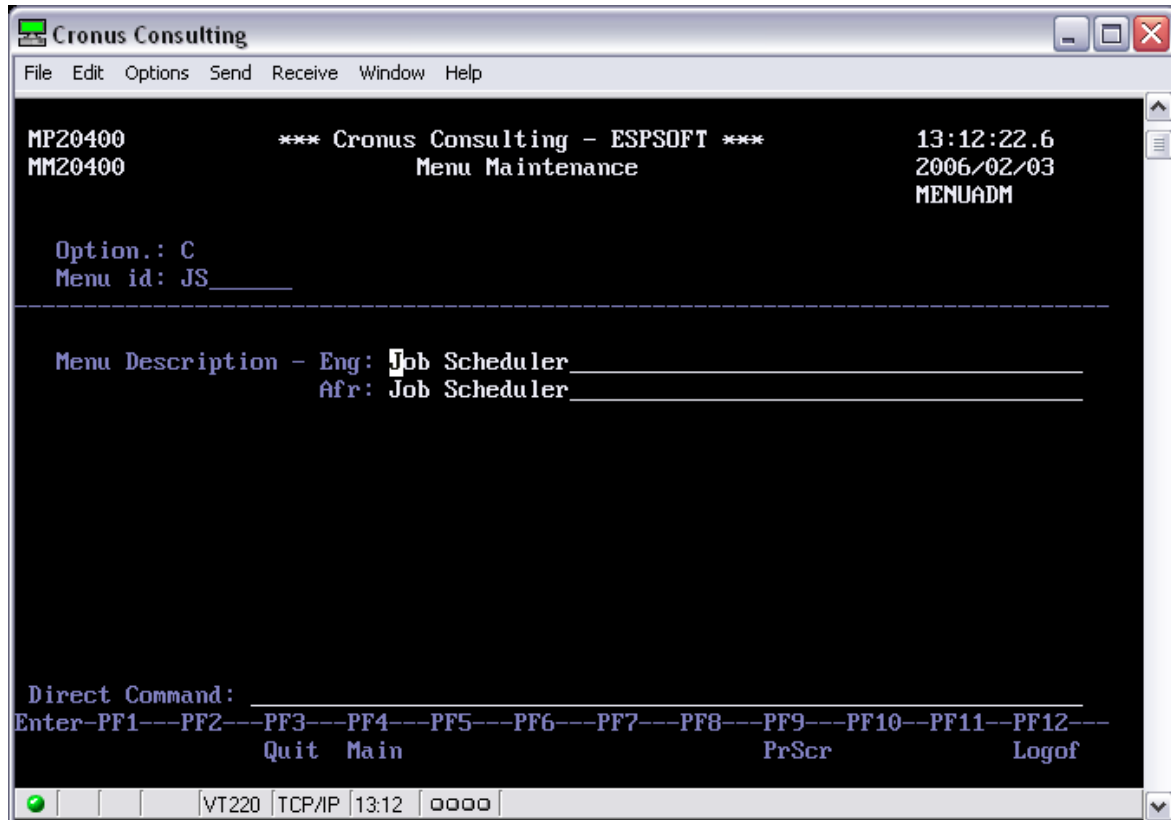
Required Information:

Function-Id	:	The function name that you which to maintain.
Menu-id	:	When adding a function, the menu-id must be supplied.
Program Library	:	Library where program resides
Program Name	:	Program name that to execute.



4.8 MA009 – Menu Maintenance

The function is used to maintain all menus. This function should be executed using the administrator User-Id "MENUADM". After selecting the function the required option must be supplied. This field is validated using a help-and-fill facility.



With this function you will be able to maintain the selected menu description.

Required Information:

- Menu-Id : The menu-id that you which to maintain.
- Menu-Desc : This is the menu description field. Both fields must be supplied.

When adding a Menu via this function, the new Menu will automatically be added to user "MENUADM". The new Menu will be placed on the Main Menu and function **Link Menus To Users** should be used to manipulate this Menus appearance.



4.9 MA010 – Code Maintenance

This function is used to define and maintain the Menu driver control codes. These codes are used internally by EspMenu.

```

Cronus Consulting
File Edit Options Send Receive Window Help

MP40010          *** Cronus Consulting - ESPSOFT ***          13:11:59.7
MM40010          Code Maintenance                          2006/02/03
                                                         MENUADM

*Option.....: C
*Code type.....: MAINHEAD_
*Code Value.....: MAINHEAD_

-----

Description....: *** Cronus Consulting - ESPSOFT ***
                  *** Cronus Consulting - ESPSOFT ***

Direct Command
Enter-PF1---PF2---PF3---PF4---PF5---PF6---PF7---PF8---PF9---PF10--PF11--PF12---
                  Quit Main                               PrScr                               Logof

VT220 | TCP/IP | 13:11 | oooo

```

Once the code type is selected the user can now maintain the code value.

Valid Code Types:

MAINHEAD	This code can be used to update the Main Heading (Organization Name) displayed at the top of every Menu and Function. After modifying this value the current session will have to be terminated for the change to take affect
ENV	This Code Value is a unique and acts as a system indicator. This code is used by ESPBATCH to determine the current environment.
ADMIN	This code is used to set the administrator group for menu access. This group should be define on the Unix/Linux O/S level and users that are linked to this secondary O/S group will automatically have MENUADM administrator access to EspMenu. This ADMIN group can be modified to any existing group on the O/S or a new secondary group can be added to match this group name.

** END **